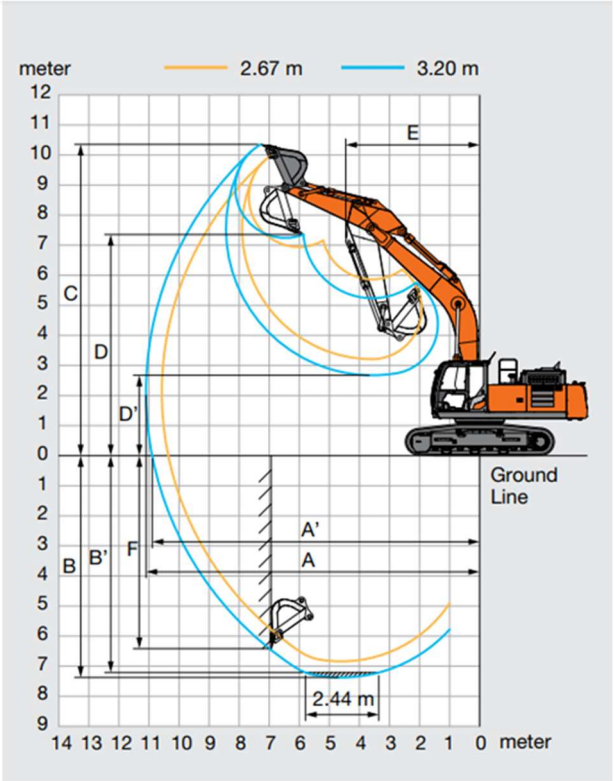
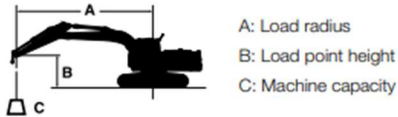


HITACHI ZX350-7

Notes: 1. Ratings are based on ISO 10567.
2. Machine capacity does not exceed 75% of tipping load with the machine on firm, level ground or 87% full hydraulic capacity.
3. The load point is the center-line of the bucket pivot mounting pin on the arm.
4. *Indicates load limited by hydraulic capacity.
5. 0 m = Ground.
For machine capacities, subtract installed attachment and quick hitch weight from machine capacities.
To determine lifting capacities, apply "Rating over-side or 360 degrees" machine capacities from the table and deduct weight of installed attachment and quick hitch.

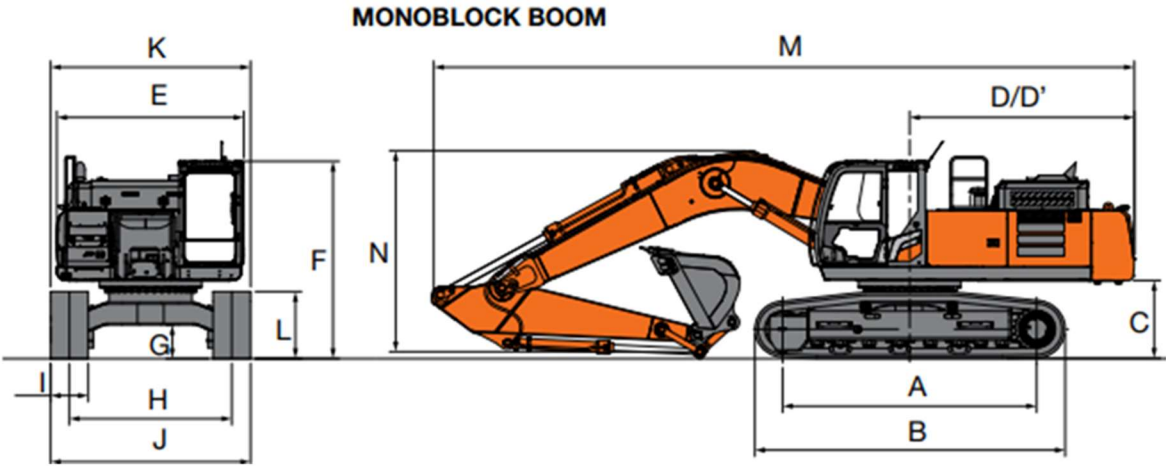


ZAXIS 350LC 2-PIECE BOOM

Conditions	Load point height m	Load radius										At max. reach		
		1.5 m		3.0 m		4.5 m		6.0 m		7.5 m		9.0 m		meter
		Rating over-front	Rating over-side or 360 degrees	Rating over-front	Rating over-side or 360 degrees	Rating over-front	Rating over-side or 360 degrees	Rating over-front	Rating over-side or 360 degrees	Rating over-front	Rating over-side or 360 degrees	Rating over-front	Rating over-side or 360 degrees	
2-Piece Boom Arm 3.2 m Counterweight 7 600 kg	10.5													4.38
	9.0							*9 070	*9 070					6.55
	7.5							*8 890	*8 890	*7 660	*7 660			7.86
	6.0					*11 660	*11 660	*9 270	*9 270	*7 760	*7 750			8.72
	4.5			*24 710	*24 710	*14 410	*14 410	*10 270	*10 270	*8 140	7 660	*6 770	5 540	9.25
	3.0	*19 630	*19 630	*25 360	*25 360	*19 680	15 700	*11 960	10 310	*8 800	7 480	*7 190	5 460	9.52
	1.5			*27 570	*27 570	*20 340	*15 760	*14 190	10 370	*9 640	7 280	*7 560	5 310	9.54
	0 (Ground)	*16 070	*16 070	*30 630	28 610	*20 290	14 850	*14 890	9 810	*10 510	6 970	*7 780	5 180	9.32
	-1.5	*21 660	*21 660	*31 960	27 840	*20 490	14 260	*15 070	9 440	10 640	6 700			8.84
	-3.0	*26 980	*26 980	*30 800	27 760	*20 300	14 080	*14 280	9 140	*9 130	6 630			8.05
	-4.5	*29 870	*29 870	*25 020	*25 020	*15 600	14 060	*8 920	*8 920					6.26



Hitachi and Movax DH25 impact hammer at working radius of 7.5m from front of tracks



Hitachi and Movax SG75V at working radius of 6.5m from front of tracks

Plant Manufacturer & Model	Track Pad Width (m)	Track Bearing length (m)	Working Weight (Te)	Max Crowd Force (kN)	Max Extraction Force (kN)	Case 1 Loading Standing or Travelling		Case 1 Loading Handling		Case 2 Loading Installation		Case 2 Loading Extraction (1)		Notes (2)
						Max Rectangular Bearing Pressure (kN/m ²)	Equivalent Track Bearing Length (m)	Max Rectangular Bearing Pressure (kN/m ²)	Equivalent Track Bearing Length (m)	Max Rectangular Bearing Pressure (kN/m ²)	Equivalent Track Bearing Length (m)	Max Rectangular Bearing Pressure (kN/m ²)	Equivalent Track Bearing Length (m)	
Bauer RTG (16T)	0.7	4.42	78	140	260	343	2.23	N/A	N/A	222	2.91	372	1.85	Maximum Working Radius = 5.91m Maximum Crowd Force = 60kN Maximum Extraction Force = 20kN
Hitachi ZX350 - 7 LC Excavator Piling Rig	0.8	4.05	40	60	60	128	2.9	148	2.41	165	1.8	171	2.2	Maximum Working Radius = 8.0m Maximum Load = 5Te (Bundle Piles)